

# Qualifying Sectors

## Employees and Pension Recipients of:



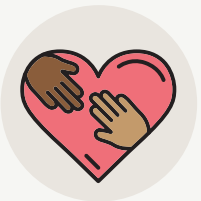
### NHS, Care Services & Private Hospitals

(inc. NHS Ambulance / Air Ambulance / Blood Service / Responders / Pharmacies / Dentists / Opticians - plus NHS Agency Staff, NHS Volunteers & NHS Students / Private Hospitals / Ambulance Service & Private Healthcare Providers / Care Homes / Social Care / Private Carers / Carers Allowance Recipients & Hospices)



### Recipients of a Means Tested Benefit

(inc. Council Tax Support / Housing Benefit / Income-Based Jobseekers Allowance (JSA) / Income-related Employment and Support Allowance (ESA) / Income Support / Pension Credit / Tax Credits (Child Tax Credit & Working Tax Credit) / Social Fund (Sure Start Maternity Grant, Funeral Payment & Cold Weather Payment) / Universal Credit)



### Registered Charities

(inc. Employees and volunteers of charities with a registered charity number)



### Approved FMCG Logistic & Manufacturing Organisations

(inc. Agency Staff)



### Police Service

(inc. Special Police Officers / Students & Volunteers)



### British Armed Forces

(inc. Army / Navy / RAF / Reserves / MoD / Veterans)



### Fire Service

(inc. Students, Volunteers & Airport Fire Services)



### Prison & Probation Services

(HMPPS)



### Support Services

(inc. Blood Bikes / Border Force / Department of Work & Pensions / Highways Agency / HM Coastguard / Immigration Enforcement & UK Visas and Immigration / Ministry of Defence / Mountain Rescue / RNLI / Search & Rescue / 4x4 Response / Red Cross / St John & St Andrews Ambulance)



**COMPANY  
SHOP**